



iCare

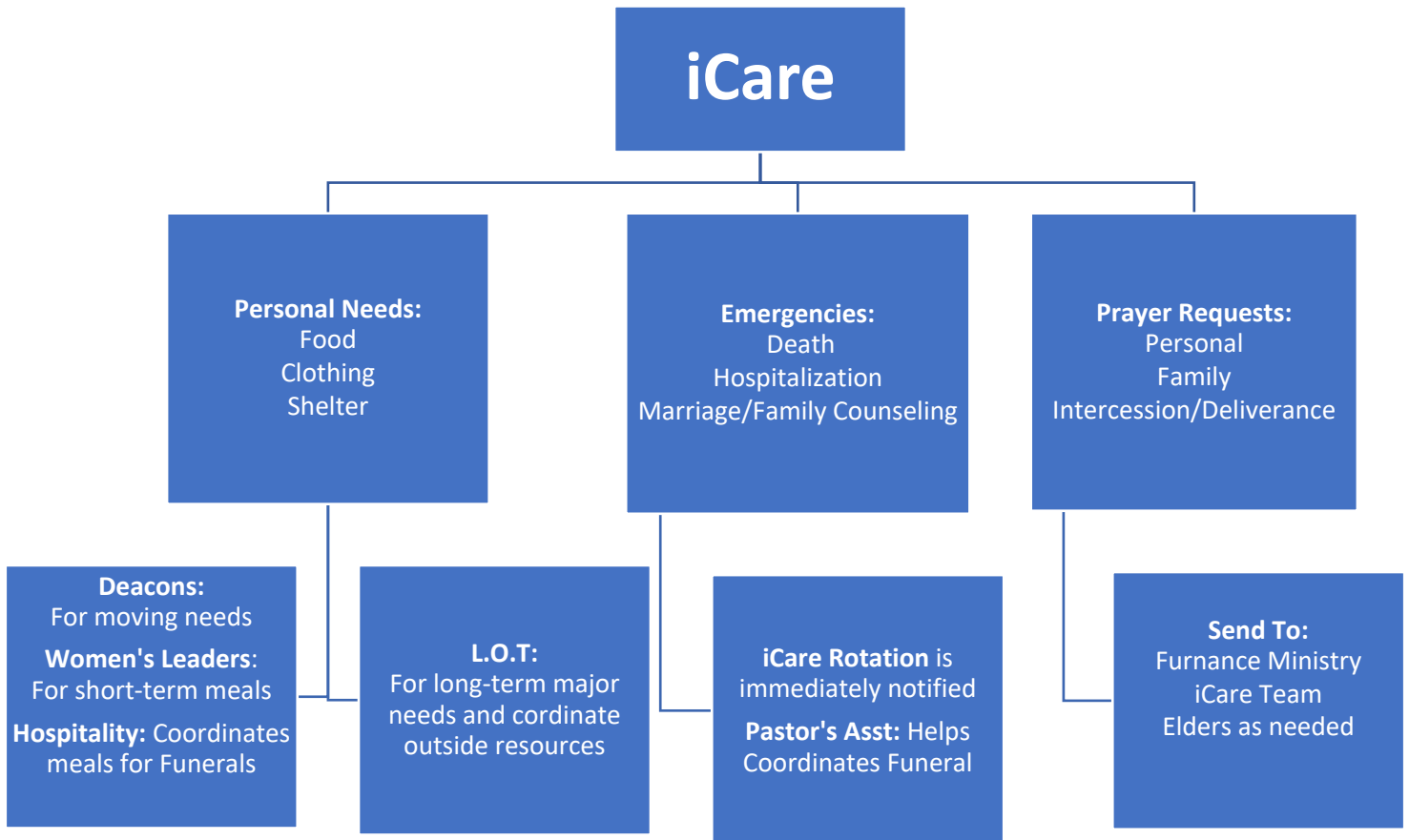
Commitment Community Church
A Place for All Nations

www.commitmentchurch.org
www.loveallnations.org

iCare
Purpose

To provide overall care of God's people—the Church by mobilizing the entire Body to care for one another.

iCare Flow Chart



Definitions:

Food, Clothing, Shelter: Long-term: to direct God's people and the local community to external resources who could provide long-term food, clothing, shelter needs. **Short-term:** to provide meals during newborn births and hospitalization.

Emergencies: To provide spiritual support for God's people during emergencies such as hospital visitations & communion, support during death of family member, and family and marriage counseling emergencies.

iCare

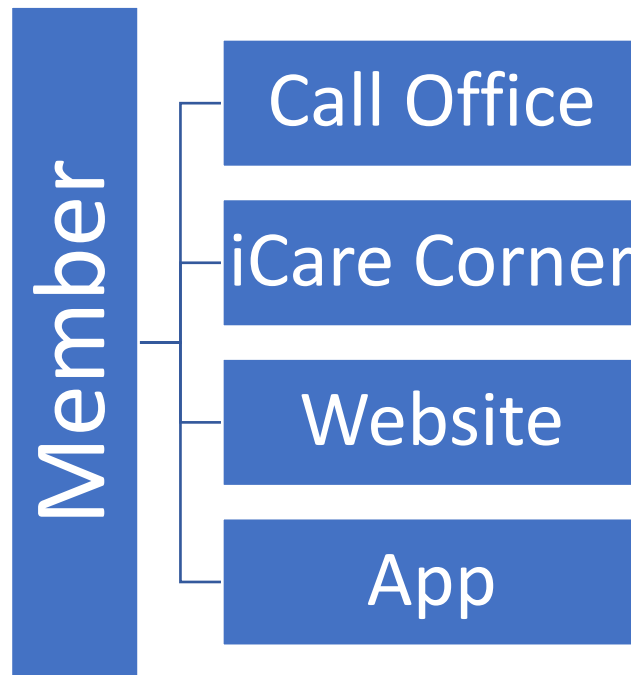
Role Descriptions

What is everyone's role with the iCare process?

- **Body of Christ:** According to Ephesians 4:14-16 we are fitted and held together by what every joint supplies, according to the proper working of each individual part, causes the growth of the body for the building up of itself in love. In other words we are to all care for one another. The care of the Body of Christ begins and ends with each one of us.
- **Deacons:** Have unique assignments based upon each one's giftedness but also have a responsibility to care and serve the Body of Christ.
- **Elders:** Have the overall responsibility for the Spiritual health and well-being of Body of Christ; along with the overall vision of the Church.
- **Furnace Ministry:** Helps lead the Body of Christ in the discipline and priority of prayer, as well the calling to intercede for the specific needs of the Church—the people and its direction.
- **Hospitality:** Helps support all ministries with their hospitality needs—but provide hospitality coordination and care during funerals.
- **iCare Rotation:** Is a group of Elders, Pastors, Deacons, Women's Leaders, and members who are on call to provide immediate care for God's people
- **iCare Team:** Are the motivators and gatekeepers of the overall churchwide care for one another.
- **L.O.T. (Least Of These):** Is an internal ministry to care for the needs of people—first to the household of God then to our local communities.
- **Pastors:** Are assigned within the Church according to their giftedness but are still heavily responsible for the overall care of the Body of Christ.
- **Women's Leadership:** Are women assigned within the Church according to their giftedness but are also called to specifically lead and intimately care for the women in the Body of Christ.

iCare

How Does This Work?



Options #1: Call the Church Office at 856.566.8500 and leave a detailed message explaining your need/concern on press **#???**.

Options #2: Visit the iCare Corner positioned at back of the Sanctuary and share your need/concern with one our iCare Team Members or fill-out an iCare “Report Card” and place in the box.

Options #3: Visit our Church Website: www.commitmentchurch.org, scroll towards the bottom and complete an iCare “Report Card”.

Options #4: Download our Church App from the App Store/Google Store then click on “Connect” to complete an iCare “Report Card”.

Other ways to iCare for one another:

Send an “iCare Postcard”

Send a personal postcard to encourage a fellow member!

“Thinking of You Poster”

Send a poster of “Well Wishes” for the sick and “Shut-ins”!

iCare “Email Blast”

Receive emails to help intercede for the needs of others!

Sign up to receive prayer emails at

Care@commitmentcommunity.org

iCare Team

To join please contact Mark Intong at
Care@commitmentcommunity.org



WHAT TO DO WITH THE iC.A.R.E. REPORT CARD:



If you notice someone has not been at Church in several weeks, PLEASE fill out this two-part card with encouraging message and place it in the box – then it will be mailed to them on your behalf.

iC.A.R.E. REPORT CARD



From: _____

Date: _____
check one: URGENT
 PROBLEM(S) DEVELOPING
 JUST CONCERNED

Person's Name: _____
Address: _____

Phone: _____ Best time to call _____ am/pm

To: _____

Requested by (your name) : _____

Your phone: _____

Last time seen: 3-6 mos. 1-3 mos. 3-4 weeks Other: _____

- Please pay them a visit Please call them Send a note
- I want to participate in the visitation Further Details on Back



Commitment Community Church
2 Berlin Road South
Lindenwold, New Jersey 08021
856.566.8500
www.commitmentchurch.org
www.loveallnations.org